

Managed Network Edge with smart cameras



Easily capture, analyze and share video data for business intelligence that results in faster, smarter decisions with better outcomes.

Powered by advanced AI and machine learning, our smart cameras provide actionable insights into your physical and digital work environments. Spectrum Enterprise® Managed Network Edge with smart cameras, powered by the Cisco Meraki platform, provides enhanced video surveillance, advanced analytics and control in one, simple to operate and scale solution. Beyond security, our smart cameras integrate advanced motion detection, object tracking and built-in analytics to keep your organization connected and protected from anywhere.

Product highlights

Managed services: We partner with your organization as an extension of your IT department to design, implement, manage and maintain your Managed Network Edge with smart cameras solution.

Smart video surveillance: See what smarter security looks like with enhanced monitoring, real-time visibility, intuitive control and advanced analytics from anywhere.

Machine-learning capabilities: Unleash the power of smart cameras as sensors by utilizing machine learning via a vast library of third-party applications built to create custom-business solutions.

Advanced analytics: Proactively empower your teams to make more informed decisions with better outcomes by providing built-in AI and machine learning capabilities such as motion detection, object tracking, heatmaps and people counting.

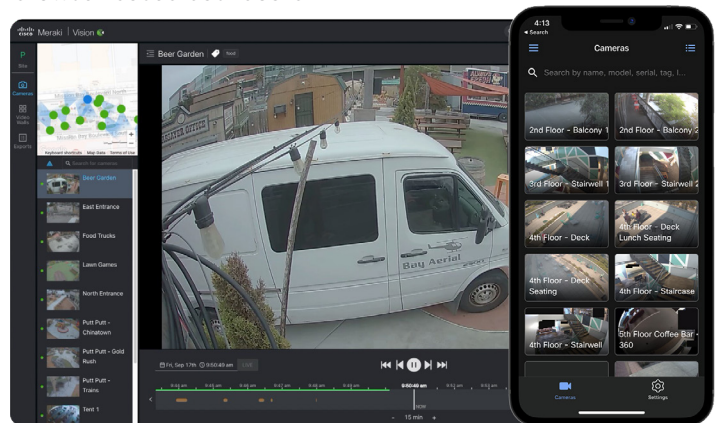
Built-in security: Help protect your organization and data at all times with end-to-end video and data encryption, secure access controls, two-factor authentication and automatic firmware and cybersecurity updates.

Cloud and local storage: Reduce complexity and costs by eliminating the need for separate storage, servers and analytics with on-camera processing, encrypted solid-state storage¹ and flexible cloud-based archiving options with storage durations ranging from seven to 365 days.

1. Model MV2 camera does not include local storage for video footage.

Securely access video on any device, from anywhere

Easily access, react and respond in real time from wherever you are located using a cloud-based portal, mobile app or browser-based dashboard.



Scalability that's simple: Wirelessly deploy up to 10,000 smart cameras across multiple locations, resulting in minimal impact to your network.

Flexible camera options: Choose from a wide range of indoor, outdoor and infrared smart cameras, including 4K telephoto, wide-angle, 360-degree fisheye and varifocal lenses — complete with fast processing power, robust security features, and sophisticated analytics in one, simple package.

Centralized and simple cloud-based management: Gain full visibility and control of your physical and digital work environments with a single, intuitive, cloud-based portal that simplifies and automates administrative tasks through remote troubleshooting and the ability to manage distributed sites from anywhere.

Intelligent video management: Quickly and easily find important video segments amongst hours of recordings by searching for motion within a specific geographical area and/or time frame.

Seamless integrations: Access hundreds of smart space partner products and services that help you innovate, build and easily integrate solutions tailored to your specific business needs.

Unlock new possibilities with built-in advanced analytics

Every Managed Network Edge smart camera goes beyond capturing footage to transforming video streams into actionable business intelligence. By leveraging cutting-edge AI and machine learning, the platform delivers advanced analytics. It empowers you to make informed decisions, optimize operations and enhance safety across your organization.

Motion detection and search capabilities: Our smart cameras are equipped with highly sensitive motion detection, capable of identifying and isolating specific movement events in real time. Motion search allows you to quickly locate relevant video footage, eliminating the need to sift through hours of recordings.

- Isolate key motion events.
- Summarize activity in a single motion with Motion Recap.
- Easily export important video segments.

Motion heatmaps: Heatmaps provide a visual representation of activity hotspots for understanding traffic flow in retail environments, customer waiting areas or high-activity zones in your facility. The data helps you optimize your layout and improve safety measures.

- Identify hot spots, patterns and trends.
- View video segments hour by hour of day by day.
- Generated entirely from metadata.

Object detection and classification: Monitor specific objects like people and vehicles with powerful object detection and classification capabilities. The system automatically categorizes these objects, providing insights into traffic patterns, security incidents, or operational inefficiencies.

- Automatically detect and track people and vehicles.
- Identify movement patterns and detect suspicious activity.
- Track object movement over time for actionable insights.

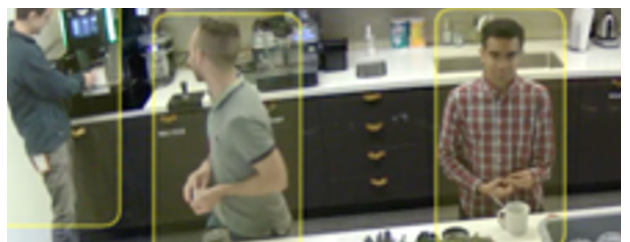
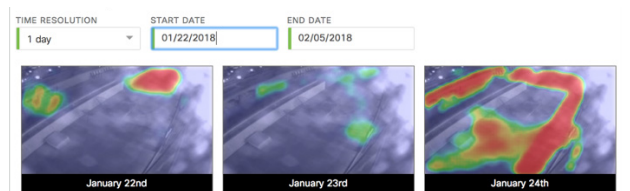
People counting and presence:² Accurately count people, monitor occupancy and foot traffic and track vehicle movement on your premises to better manage customer queues, ensure compliance with occupancy limits and optimize space utilization.

- Get precise counts of people entering and exiting areas.
- Monitor zone usage for better resource allocation.
- Generate foot traffic and occupancy trend reports.

Attribute search filters:³ Use attribute filters to quickly and easily filter motion events by color of clothing, vehicle make and model and the “find similar clips” function.

- Search by the color of a person’s clothing.
- Search by vehicle make and color.

2. People counting and presence is available for all second-generation and third-generation cameras; advanced people counting is only available for MV33 and MV93 series cameras.
3. Attribute search feature is only available with the MV13M and MV63 series cameras.



Define area for analytics
Move nodes of the existing blue area to define area for analytics detection.

Title:

Detection: Choose objects for analytics data.
 People Vehicles

Duration: How long should the detection endure to be counted? (max. 180s)
 sec

Top clothing

Bottom clothing

Cameras⁴

Every Managed Network Edge camera model comes with a powerful processor; robust data encryption and security features; machine learning and advanced business analytics; and an optional cloud-based archive service — all backed by 100%, 24/7/365 U.S.-based support and a 4-hour mean time to restore service.⁵

	Flexible and adjustable	General coverage areas		Spaces requiring 360° views	
Indoor	 <p>MV2</p> <p>Flex lens 103° FoV Up to 1080p video No on-camera storage</p>	 <p>MV12 Series</p> <p>Fixed lens Wide 114° FoV or Narrow 73° FoV Up to 1080p video 256 GB storage</p>	 <p>MV13M</p> <p>Fixed lens 101.3° FoV Up to 4K video 512 GB storage Up to 60 days retention</p>	 <p>MV32</p> <p>Fisheye lens 360° FoV Up to 2058 x 2058 resolution 8.4 MP sensor 256 GB storage</p>	 <p>MV33M</p> <p>Fisheye lens 360° FoV Up to 2880 x 2880 resolution 12.3 MP sensor 512 GB storage</p>
	Long range	More detail and storage options		Spaces requiring 360° views	
Indoor/Outdoor	 <p>MV52</p> <p>Bullet lens 12° to 37° FoV Up to 4K video 1 TB storage</p>	 <p>MV63 Series</p> <p>Fixed lens 102° FoV Up to 4K video Up to 1 TB storage Up to 60 days retention</p>	 <p>MV72 Series</p> <p>Varifocal lens 36° to 112° FoV Up to 1080 video 256 GB to 512 GB storage</p>	 <p>MV93 Series</p> <p>Fisheye lens 360° FoV Up to 4072x3046 resolution 12.4 MP sensor Up to 1 TB storage and 60 days retention</p>	

4. Power over Ethernet (PoE) is required to power all camera access points.
5. 4-hour mean time to restore service service-level agreement.

[Learn more](#)

About Spectrum Enterprise

Spectrum Enterprise, a part of Charter Communications, Inc., is a national provider of scalable, fiber technology solutions serving many of America’s largest businesses and communications service providers. The broad Spectrum Enterprise portfolio includes [networking and managed services solutions](#): [Internet access](#), [Ethernet access and networks](#), [Voice](#) and [TV solutions](#). The Spectrum Enterprise team of experts works closely with clients to achieve greater business success by providing solutions designed to meet their evolving needs. For more information, visit enterprise.spectrum.com.

©2024 Charter Communications. All rights reserved. Spectrum Enterprise is a registered trademark of Charter Communications. All other logos, marks, designs and otherwise are the trademarks and intellectual property of their respective third-party owners. Not all products, pricing and services are available in all areas. Pricing and actual speeds may vary. Restrictions may apply. Subject to change without notice.

