

# Managed Network Edge with smart cameras



## See your organization in a completely new way

Managed Network Edge with smart cameras is delivered over the Cisco Meraki platform and provides important data, analytics and control to enhance your operations. Most cameras come with encrypted solid-state storage and two-factor authentication to keep footage from getting into the wrong hands. Beyond security, motion sensors in the cameras streamline monitoring of equipment, customer waiting areas, deliveries and a diverse range of other applications.

Available to meet every video monitoring need including indoors, outdoors and infrared for areas with poor lighting, Managed Network Edge with smart cameras comes with an intuitive, web-based portal that provides a single pane of glass for simple camera monitoring, management and operation.

Video footage is stored locally and may be supplemented with an additional cloud-based archive service offered in continuous 7-, 30-, 90-, 180- and 365-day increments.

### Indoor-rated cameras

**Flexible and adjustable MV2**



Brings together physical security and advanced analytics in a flexible, compact camera with a 103-degree field of view.

**Narrow angle MV12N**



Best for hallways and corridors and useful for subject identification, with a 73-degree horizontal field of view.

**Wide angle MV12W**



Provides overall context of a scene, with a 114-degree horizontal field of view.

**360-degree MV32**



Offers 360-degree views and is ultra-compact to blend into any space. It features in-browser dewarp with virtual pan, tilt and zoom on live and historical focus.

### Indoor/outdoor-rated cameras

**Ultra-long-range telephoto bullet MV52**



An ultra-long-range 4K camera for challenging environments where distance and detail matter. Ideal for a parking lot or perimeter monitoring, license plate capture or subject identification.

**Varifocal MV72**



Varifocal dome camera with a 36- to 112-degree horizontal field of view and 3X optical zoom for greater details at a distance, ideal for large areas ranging from schoolyards to manufacturing.

**High-res MV63**



Wide-angle, fixed lens camera with a 102-degree field of view, ideal for monitoring entrances and exits, even in low light.

**Panoramic MV93**



Offers 360-degree views ideal for improving safety and security for parking lots, warehouses and other open spaces, even in low light.

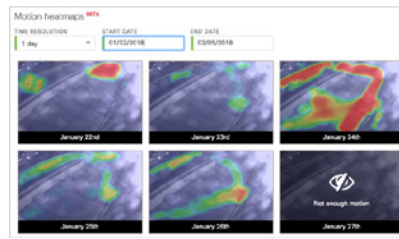
## Features

Every Managed Network Edge smart camera model comes with a powerful processor; robust data encryption and security features; machine-learning and advanced business analytics; and an optional cloud-based archive service.



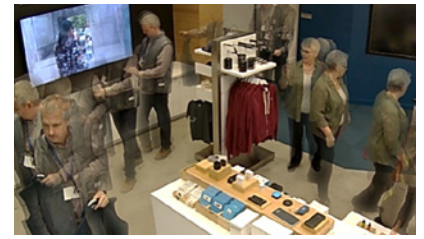
### Motion search

- Isolate key motion events.
- Motion recap results summarize activity in a single image.
- Easily export important video segments.



### Motion heatmaps

- Understand motion to identify hot spots, patterns and trends.
- Hour-by-hour or day-by-day view.
- Generated entirely from metadata.



### Object detection

- Detect, classify and track objects.
- People counting over time.

Smart camera <sup>1</sup>	Field of view	Video quality	Camera lens	Device storage
MV2 <sup>2</sup>	103 degrees	Up to 1080p HD (1920x1080)	4 MP	N/A
MV12N	73 degrees	Up to 1080p HD (1920x1080)	4 MP	256 GB
MV12W	114 degrees	Up to 1080p HD (1920x1080)	4 MP	256 GB
MV32	360 degrees	Up to 2058x2058	8.4 MP	256 GB
MV52	12-37 degrees horizontal	4K (3840x2160)	8.4 MP	1 TB
MV72	36-112 degrees horizontal	1080p HD (1920x1080)	4 MP	256 GB
MV72X	36-112 degrees horizontal	1080p HD (1920x1080)	4 MP	512 GB
MV63	102 degrees	Up to 2560x1440	8.4 MP	256 GB
MV93	360 degrees	Up to 2112x2112	12.4 MP	256 GB

1. Power over Ethernet (PoE) is required to power all camera access points.
2. Model MV2 camera does not include local storage for video footage.

[Learn more](#)

### About Spectrum Enterprise®

Spectrum Enterprise, a part of Charter Communications, Inc., is a national provider of scalable, fiber technology solutions serving many of America's largest businesses and communications service providers. The broad Spectrum Enterprise portfolio includes [networking and managed services solutions](#); [Internet access](#); [Ethernet access and networks](#); [Voice](#) and [TV solutions](#). The Spectrum Enterprise team of experts works closely with clients to achieve greater business success by providing solutions designed to meet their evolving needs. For more information, visit [enterprise.spectrum.com](https://enterprise.spectrum.com).